

Specification

Filtration · Rapid Tests · Water Analysis · Chromatography · Bioanalysis
Filtration · Schnellteste · Wasseranalytik · Chromatographie · Bioanalytik

Product:	CHROMAFIL® Xtra Cellulose Mixed Esters (MV)
REF:	729206
	Filters are HPLC certified for low level UV-absorbing substances for gaining accurate chromatographic results
Housing material:	Polypropylene (PP)
Labeling:	membrane type imprinted on filter top
Membrane filter material:	Cellulose Mixed Esters
Pore diameter:	0.20 µm
Filter diameter:	25 mm
Filtration area:	~ 4.9 cm ²
Pressure stability:	> 12 bar
Connections inlet:	Female luer lock
Connections outlet:	Male luer
Dead volume:	~ 80 µL

HPLC-test

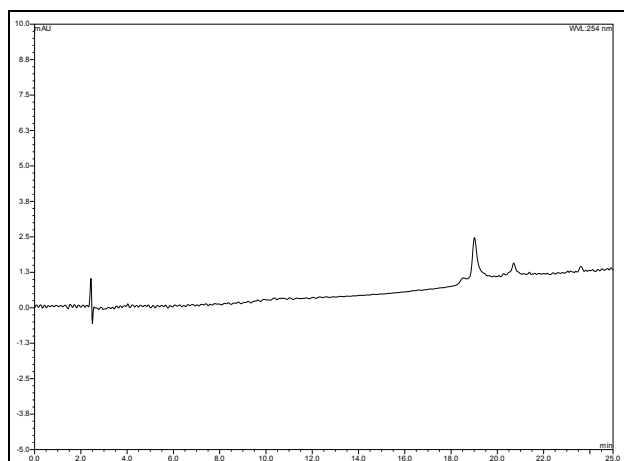
Conditions:	Two mL of the solvent (specified on top of the chromatograms) were applied to the filter; 100 µL of the filtrate were injected to the HPLC.
Eluent A:	water
Eluent B:	acetonitrile
Gradient:	10% → 95% B in 25 minutes
Flow rate:	0.5 mL/min
Sensitivity:	-5 to 10 mAU at 254 nm
Column:	125/4 NUCLEODUR C18 Gravity 5 µm (REF: 760100.40)

Specification

Filtration · Rapid Tests · Water Analysis · Chromatography · Bioanalysis
Filtration · Schnellteste · Wasseranalytik · Chromatographie · Bioanalytik

Water:

Eluate:



Blanc:

